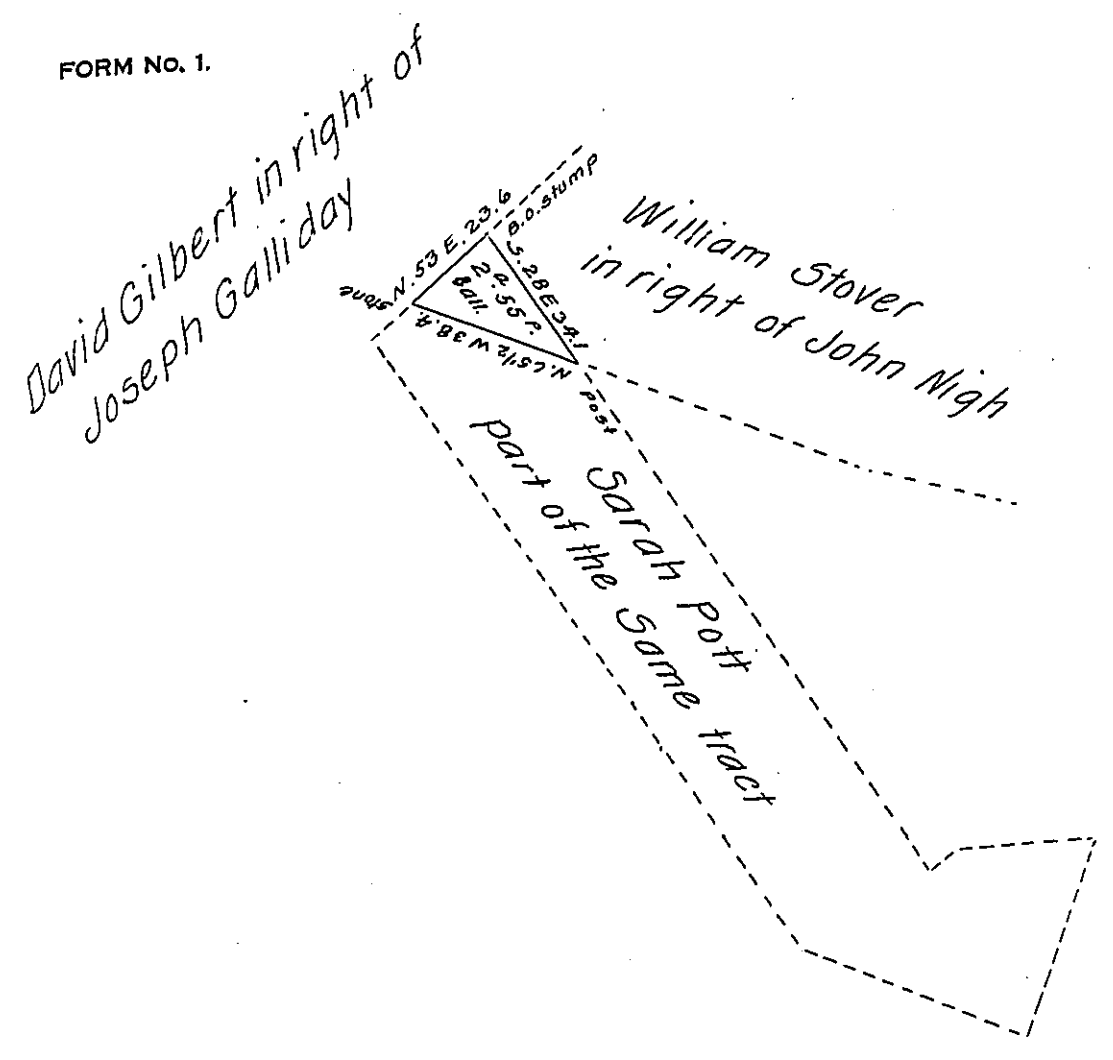


FORM NO. 1.



Draught of a piece of Land in Antrim Township formerly in the County of Cumberland, now Franklin County Pa. Containing two acres and fifty five perches & allowance of Six per cent. for Roads &c. being part of a larger tract of Land formerly Surveyed in pursuance of a Warrant granted to John Wagqerly bearing date the 16<sup>th</sup> day of May 1763 for 100 acres. there was a Survey made representing part of the Original Survey as above plotted off the 27<sup>th</sup> day of December A. D. 1815 and returned to the Surveyor General's Office July 23<sup>d</sup> 1817 for 40<sup>a</sup> 27<sup>r</sup> in favour of John Nigh, <sup>in right of John Wagqerly</sup> the Original Survey not to be found in this office Resurveyed and divided off from the 40<sup>a</sup> 27<sup>r</sup> Survey April 3<sup>d</sup> 1851 for the use of William Stover.

Emanuel Kuhn C.S.

To J. Laporte Esq<sup>r</sup>  
Surveyor General

IN TESTIMONY that the above is a copy of the original remaining on file in the Department of Internal Affairs of Pennsylvania, made conformably to an Act of Assembly approved the 16th day of February 1833, I have hereunto set my hand and caused the Seal of said Department to be affixed at Harrisburg, this eighth day of October 1907.

*Henry Houck*  
Secretary of Internal Affairs.